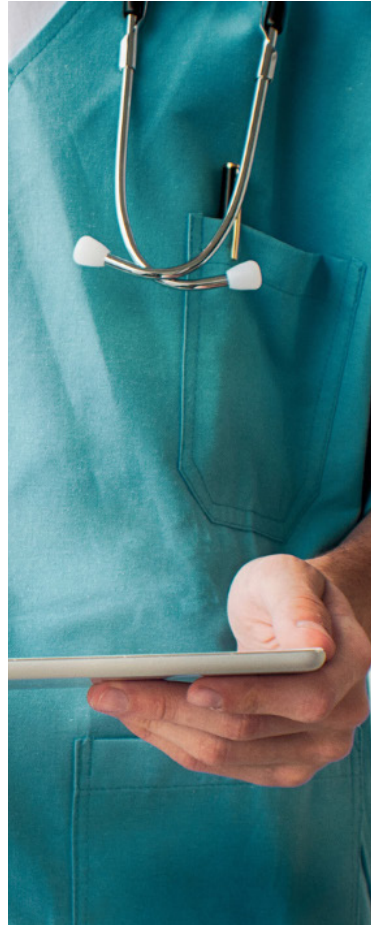


Traumatic Brain Injury

From
Symptoms
to Solutions



SYNERGEXMED

PAIN MANAGEMENT & NEURO

Expert Care, Anywhere, Anytime

What is TBI and How Do I Know if I Have One?

A **Traumatic Brain Injury (TBI)** happens when a sudden blow, jolt, or impact to the head disrupts the brain's normal function. This can occur during a car accident, fall, sports injury, or any incident where the brain is shaken or struck.



Persistent headaches or pressure in the head



Confusion, trouble concentrating, or memory problems



Dizziness, balance issues, or blurred vision



Feeling unusually tired or sluggish



Changes in mood, personality, or sleep patterns



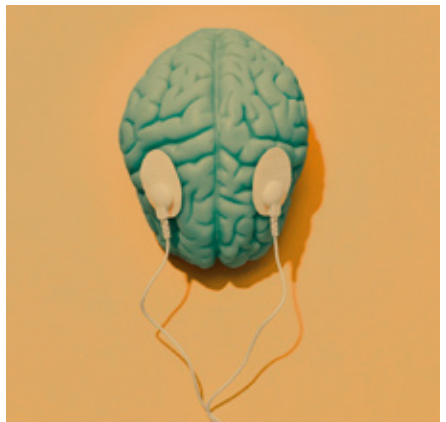
Nausea, vomiting, or sensitivity to light and sound

Some symptoms appear immediately, while others may develop hours or even days after the injury. If you've had a recent head impact and notice any of these changes, seek medical attention right away; early evaluation is key for recovery and documentation.



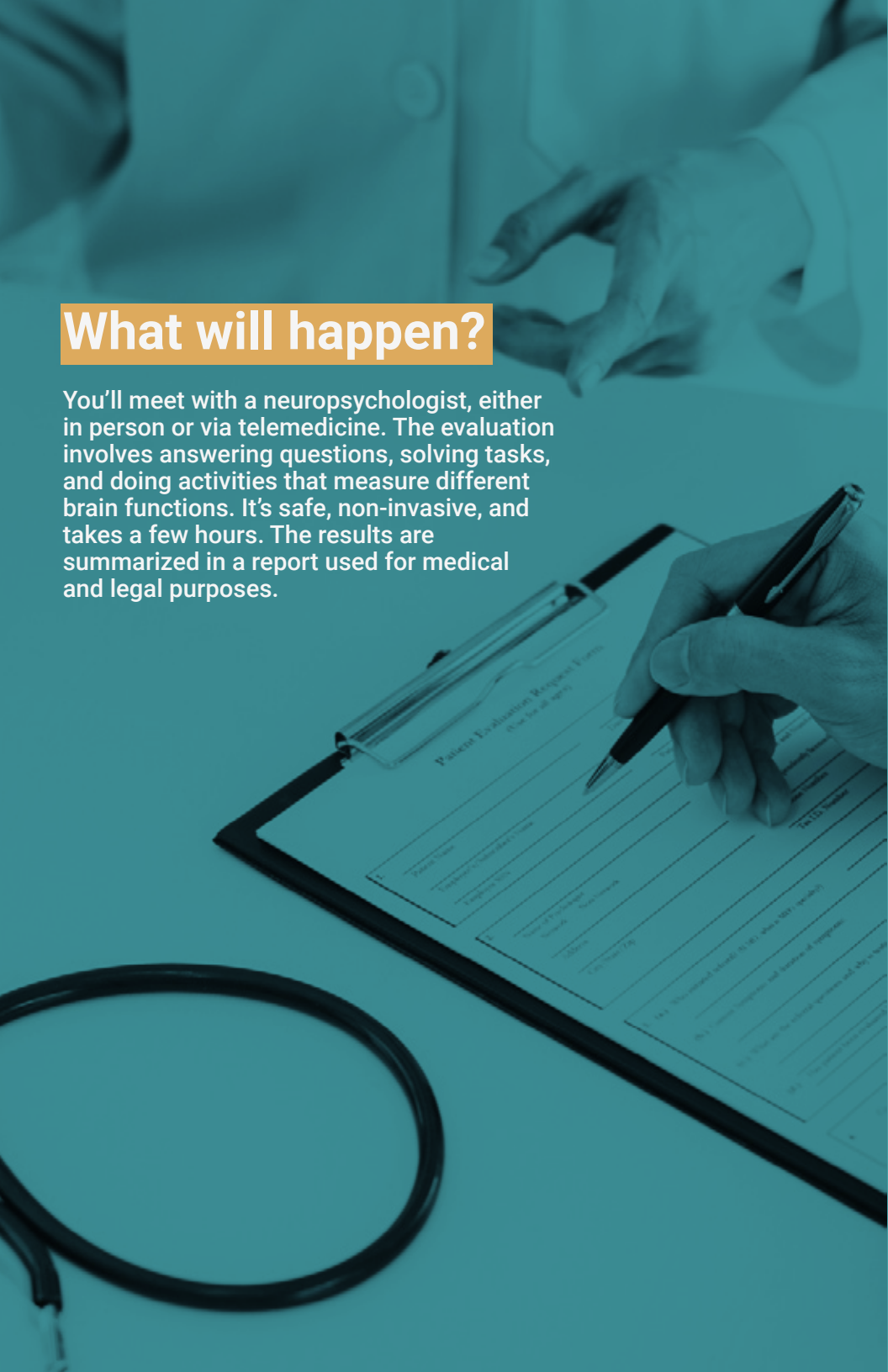
What it's for?

A neuropsychological evaluation after a TBI measures how your brain is working beyond what scans can show. It helps detect problems with memory, attention, processing speed, and emotional regulation. For the patient, it guides treatment. For the attorney, it provides objective evidence that validates your symptoms and strengthens your personal injury case.



What will happen?

You'll meet with a neuropsychologist, either in person or via telemedicine. The evaluation involves answering questions, solving tasks, and doing activities that measure different brain functions. It's safe, non-invasive, and takes a few hours. The results are summarized in a report used for medical and legal purposes.



What effects you can expect?

After a TBI, you may experience headaches, memory lapses, difficulty focusing, mood swings, fatigue, or sleep issues.



Some symptoms appear right away, others weeks later.

These changes can impact daily life and work performance, which is why documentation is critical.



What you can do on **your own?**

Rest and avoid overexertion

Keep a consistent sleep schedule

Eat a balanced diet and stay hydrated



Avoid situations that risk another head injury

Keep a symptom journal to share with your doctor and attorney



What you can do with your **doctor?**



Follow a treatment plan designed for your symptoms



Attend therapy for cognitive or emotional changes



Address mood or behavioral symptoms early



Use telemedicine for convenient follow-ups and ongoing support



SYNERGEXMED

PAIN MANAGEMENT & NEURO

What Can We Do For You?

At Synergex Med, we provide **in-person visits and procedures** for pain management and neurology, ensuring fast, expert care when you need it most. For psychology, psychiatry, and neuropsychology, we offer **secure appointments**, making evaluations, therapy, and medication management accessible anywhere.

We work with both patients, delivering accurate diagnoses, evidence-based treatments, and detailed medical reports.

**Faster scheduling experience with
our Referral Form**

[Refer A Patient](#)

CA line

(562) 414-4452

AZ line

(480) 253-9577

**admin@synergexmed.com
www.synergexmed.com**